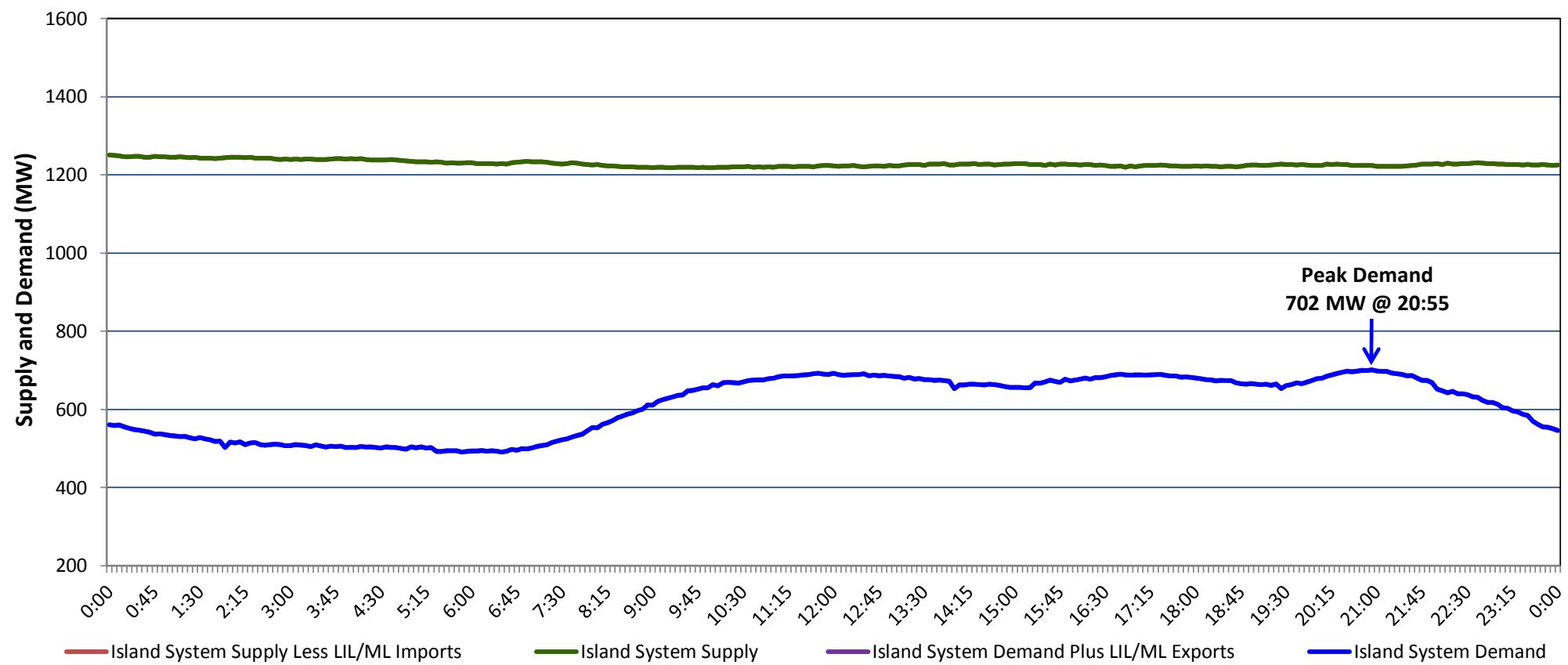


**Newfoundland Labrador Hydro (NLH)  
Supply and Demand Status Report Filed Monday, August 27, 2018**

**Section 1  
Island Interconnected System Supply, Demand & Exports  
Actual 24 Hour System Performance For Sunday, August 26, 2018**



**Supply Notes For August 26, 2018**

- A As of 1438 hours, May 22, 2018, Holyrood Unit 2 unavailable due to planned outage 70 MW (170 MW).
- B As of 0801 hours, July 19, 2018, Holyrood Unit 3 removed from service for economic dispatch 110 MW (150 MW).
- C As of 1000 hours, July 27, 2018, Holyrood Unit 1 unavailable due to planned outage 88 MW (170 MW).
- D As of 0823 hours, August 06, 2018, Cat Arm unit 1 unavailable due to planned outage 50 MW (67 MW).
- E As of 1000 hours, August 06, 2018, Cat Arm unit 2 unavailable due to planned outage (67 MW).
- F As of 1609 hours, August 07, 2018, Stephenville Gas Turbine available at 25 MW (50 MW).
- G As of 1118 hours, August 21, 2018, Holyrood Gas Turbine unavailable due to planned outage (123.5 MW).
- H As of 0651 hours, August 24, 2018, Granite Canal Unit available at 37 MW (40 MW).

**Section 2  
Island Interconnected Supply and Demand**

| Mon, Aug 27, 2018                                 | Island System Outlook <sup>3</sup> | Seven-Day Forecast           | Temperature (°C) |         | Island System Daily Peak Demand (MW) |                       |
|---|------------------------------------|------------------------------|------------------|---------|--------------------------------------|-----------------------|
|   |                                    |                              | Morning          | Evening | Forecast                             | Adjusted <sup>7</sup> |
| Available Island System Supply: <sup>5</sup>      | 1,200 MW                           | Monday, August 27, 2018      | 18               | 20      | 775                                  | 775                   |
| NLH Island Generation: <sup>4</sup>               | 915 MW                             | Tuesday, August 28, 2018     | 18               | 20      | 790                                  | 790                   |
| NLH Island Power Purchases: <sup>6</sup>          | 95 MW                              | Wednesday, August 29, 2018   | 19               | 21      | 795                                  | 795                   |
| Other Island Generation:                          | 190 MW                             | Thursday, August 30, 2018    | 22               | 16      | 785                                  | 785                   |
| ML/LIL Imports:                                   | - MW                               | Friday, August 31, 2018      | 11               | 11      | 855                                  | 855                   |
| Current St. John's Temperature & Windchill: 15 °C | N/A °C                             | Saturday, September 01, 2018 | 11               | 11      | 805                                  | 805                   |
| 7-Day Island Peak Demand Forecast:                | 855 MW                             | Sunday, September 02, 2018   | 13               | 12      | 785                                  | 785                   |

**Supply Notes For August 27, 2018**

- Notes:
1. Generation outages for running and corrective maintenance are included. These are not unusual for power system operations. They generally do not impact customer supply. The power system operators schedule outages to system equipment whenever possible to coincide with periods when customer demands are low and sufficient supply reserves are available. However, from time to time equipment outages are necessary and reserves may be impacted.
  2. Due to the Island System having no synchronous connections to the larger North American grid, when there is a sudden loss of large generating units some customer's load must be interrupted for short periods to bring generation output equal to customer demand. This automatic action of power system protection, referred to as under frequency load shedding, is necessary to ensure the integrity and reliability of system equipment. Under frequency events typically occur 5 to 8 times per year on the Island Interconnected System and the resultant customer load interruptions are generally less than 30 minutes.
  3. As of 0800 Hours.
  4. Gross output including station service at Holyrood (24.5 MW) and improved NLH hydraulic output due to water levels (35 MW).
  5. Gross output from all Island sources (including Note 4).
  6. NLH Island Power Purchases include: CBPP Co-Gen, Nalcor Exploits, Rattle Brook, Star Lake, Wind Generation, Vale capacity assistance (when applicable).
  7. Adjusted for CBPP, Vale and Praxair interruptible load, Maritime Link and Labrador-Island Link exports and the impact of voltage reduction, when applicable.

**Section 3  
Island Peak Demand Information  
Previous Day Actual Peak and Current Day Forecast Peak**

|                   |  |       |        |
|-------------------|--|-------|--------|
| Sun, Aug 26, 2018 | Actual Island Peak Demand <sup>8</sup> | 20:55 | 702 MW |
| Mon, Aug 27, 2018 | Forecast Island Peak Demand            |       | 775 MW |

Notes: 8. Island Demand / LIL / ML Exports (where applicable) is supplied by NLH generation and purchases, plus generation owned and operated by Newfoundland Power and Corner Brook Pulp & Paper (Deer Lake Power, DLP).